



Health Workers Save Lives

STRATEGIC PLAN

2030

Seed Global Health is founded on the belief that health workers are essential—they are the heart of our health systems. As we face increased health risks due to climate change, pandemics, and other emergencies, the world needs health workers more than ever before.

Our commitment to our partners

The governments of Malawi, Uganda, Sierra Leone, and Zambia have asked Seed to deepen, replicate, scale, and grow our partnerships because the results we've achieved together have increased the number of skilled health workers, strengthened the quality of care, and improved health outcomes.

Over the next six years, we will deepen our commitment and service to our partners. Our strategic plan is mapped to 2030 in support of our partners' priorities to contribute to achieving universal health coverage and the Sustainable Development Goals. At Seed, our priorities are guided by their priorities—that's part of what makes us different.

Our 2030 Goals

To respond to the priorities of our partners, over the next six years Seed Global Health will work towards two goals:

Goal 1. Build the Health Workforce of the Future



Country Partnership

- Continue and deepen our partnerships with the governments of Malawi, Sierra Leone, Uganda, and Zambia to build and strengthen their national health workforces to close human resource gaps, expand access and improve patient quality of care, and save lives.
- Support our government partners to scale, replicate, and expand proven approaches and interventions to additional sites when and where appropriate.

Climate and Pandemic Resilience

- Educate, train, and mentor health workers to recognize and confront the health threats created by climate change, provide high-quality care and advise patients how to take care of their health during climate and other emergencies, and problem solve when challenges and emergencies arise.
- Integrate the health effects of climate change into health professional school curricula when and where appropriate.

Goal 2. Advance the Health Workforce as a Global Priority



Policy

- Advocate for new and strengthened global, regional, and national policies to educate, support, protect, absorb, and sustain the health workforce.

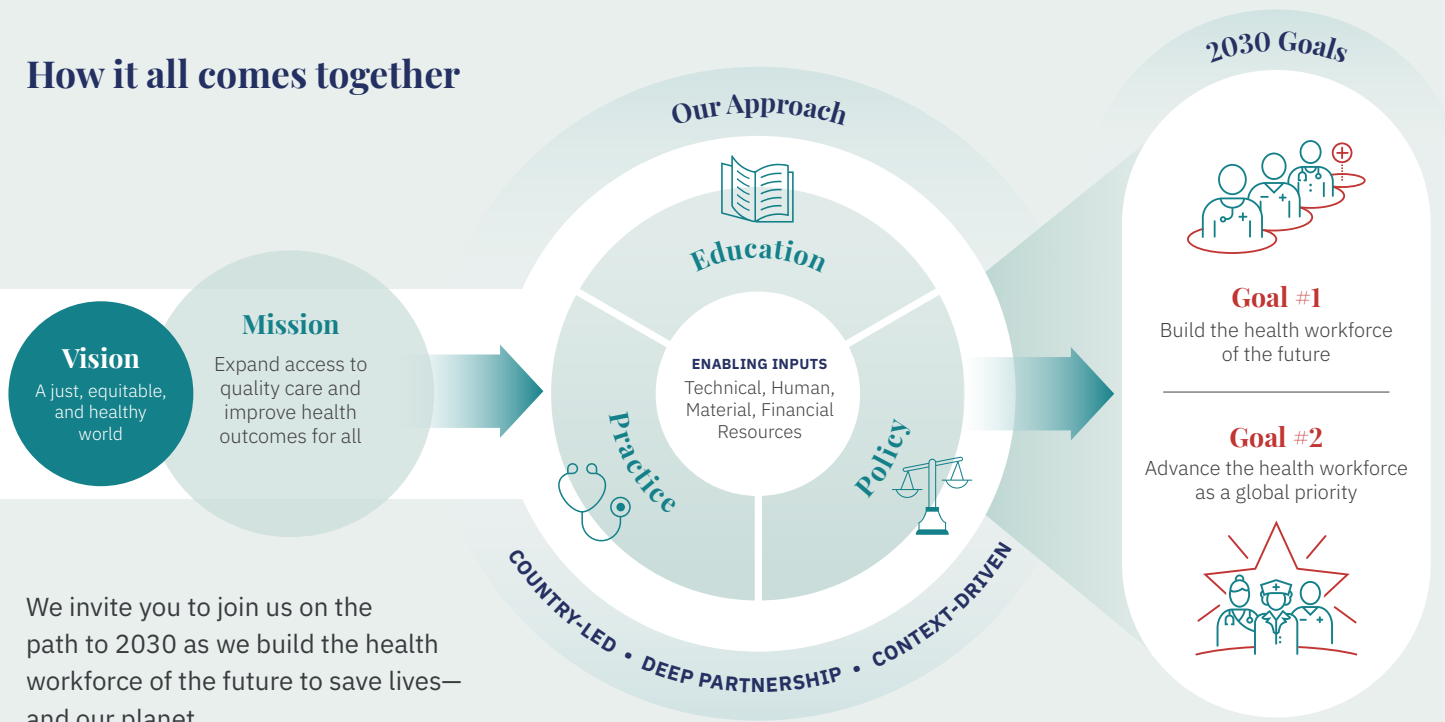
Financing

- Advocate for increased international and domestic investments, development funding, and philanthropic giving to strengthen the global health workforce, especially across Africa.
- Champion the need for financing to be flexible, long-term, and adapted to local need.

Climate Change and Health

- Raise awareness about the effects of climate change on human health and wellbeing and the need to strengthen health systems and the health workforce as critical adaptation measures.
- Work across our four partner countries to support them to address and prepare for the impact of climate change on their health systems.

How it all comes together



We invite you to join us on the path to 2030 as we build the health workforce of the future to save lives—and our planet.

How we measure success

Our measures of success provide a framework for how we will assess progress toward our 2030 goals in the short, medium, and long term. Seed Global Health will work to:

Close the gap. Increase the quantity of qualified and practice-ready health workers to achieve our partner country goals.

Catalyze investment. Increase and optimize global, national, and local allocation of resources for the health workforce.

These measures of success are the foundation of our monitoring, evaluation, and learning strategy. Within each measure of success, Seed will develop metrics to assess progress and impact.

Bolster health systems. Strengthen sustainable and resilient institutions that transform care and save lives.

Save lives. Improve health outcomes for the populations we serve.



Together with our partners, we have trained more than **42,000 health workers** who work in health facilities serving more than **76 million people**.

About Seed Global Health

Seed Global Health partners with governments, health professional schools, hospitals, and clinics to educate health workers, strengthen the quality of health services, and support policies that enable health professionals to deliver high-quality services to those in need.

www.seedglobalhealth.org



Connect with us!

