



Seed
GLOBAL HEALTH



Resilience Through Crises

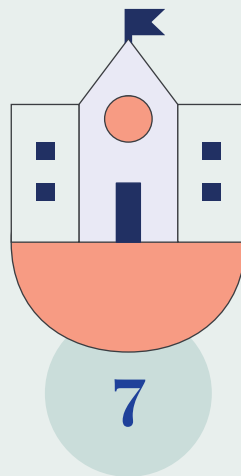
Investing In Health Workers In Uganda.

Photo Credit: Ministry Of Health **UGANDA**

Since 2013, Seed Global Health (Seed) has collaborated with the Government of Uganda and our in-country partners to train physicians, nurses, and midwives in order to build a resilient health system and improve access to high-quality care.



Partnerships
Formed



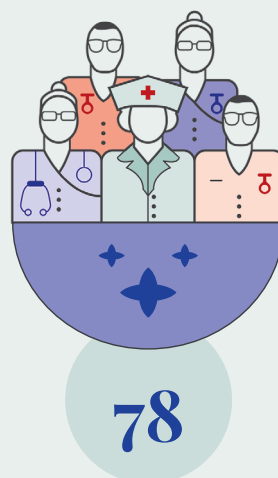
Clinical &
Training Sites

Our work in the country over the past years has been fundamental and critical to addressing health challenges of all types. It has also helped position us to assist in the national COVID-19 preparedness and response efforts. In the face of the pandemic, Seed found new ways to continue strengthening the health workforce.

From the onset of the pandemic, we mobilized early, rapidly, and comprehensively – guided by the priorities identified by the Ministry of Health (MOH) and our partners' urgent needs. Leveraging Seed's technical expertise and experience in the country, we organized our support around three primary objectives – **sharing critical knowledge, strengthening the health workforce, and scaling innovative solutions.**

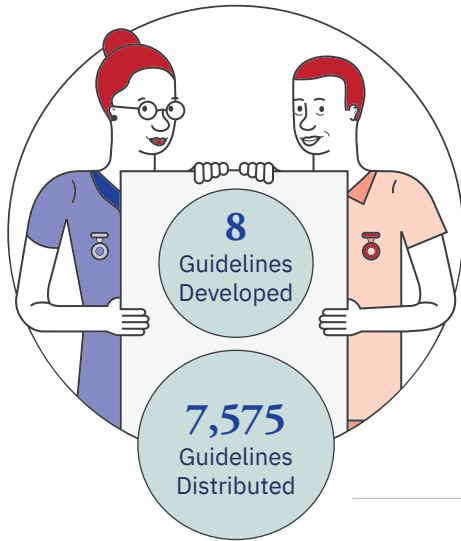


Worth Of Ppe
Distributed



Health Workers
Trained

SHARING CRITICAL KNOWLEDGE



1

DEVELOPING GUIDELINES

In collaboration with the MOH and others, our team developed national COVID-19 guidelines that focused on prehospital emergency medical services; case management; occupational safety and standard operating procedures; and quarantine.

2

PROVIDING ONLINE TRAINING

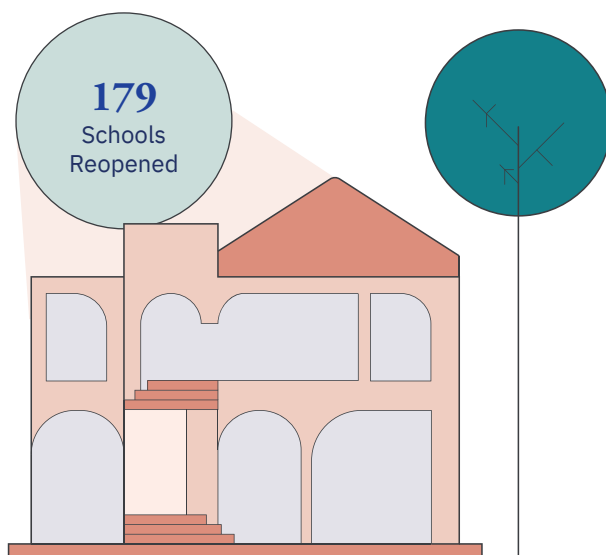
We leveraged technology to conduct timely training for health workers across the country through targeted webinars covering topics ranging from managing COVID-19 patients to prenatal and postnatal care during the pandemic to mental health.



3

REOPENING MEDICAL SCHOOLS

Through the 'Safe Schools Initiative,' Seed advocated for the prioritized reopening of medical schools. Although COVID-19 presents profound challenges, it also provides the opportunity to mentor medical students—the next generation of health workers—on pandemic management in real time and preserve a lasting institutional memory that will protect us from future shocks.



STRENGTHENING THE HEALTH WORKFORCE

1

CASE MANAGEMENT TRAINING

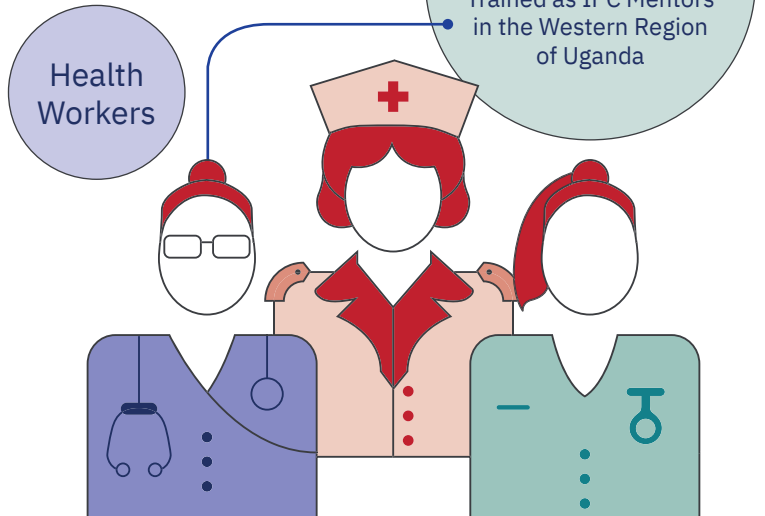
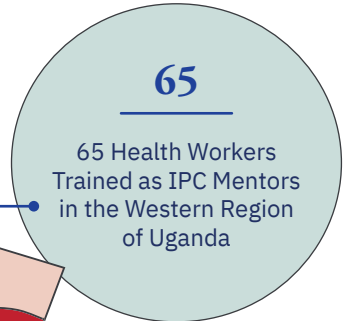
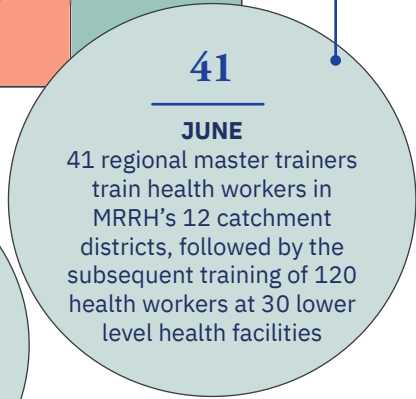
Recognizing our longstanding commitment to training skilled professionals in the country, Seed was invited to support regional training and dissemination programs, including in the Lango and Ankole sub-regions. We leveraged a cascade approach to train regional referral hospitals, district teams, and lower-level health facilities.



2

INFECTION PREVENTION AND CONTROL

To mitigate health worker infection risk, the MOH tasked Seed and other partners with conducting rapid assessments in regional referral hospitals and developing plans to strengthen infection prevention and control (IPC) in these hospitals. We assessed four hospitals—MRRH, Mbale Regional Referral Hospital, Lira University Teaching Hospital, and Kiruddu Hospital— where there had been an increase in health worker infections. From our findings, Seed identified the need to train health workers in Infection Prevention and Control Measures, establish appropriate COVID-19 screening and triage protocols, safe patient flow procedures, rational use of personal protective equipment, and adherence to IPC protocols.



SCALING INNOVATIVE SOLUTIONS



PRODUCING HAND SANITIZER

Busitema University, one of our partner institutions, realized that local health facilities were experiencing disruptions in care delivery because they lacked hand sanitizer. With support from Seed, faculty at the university stepped into the moment with ingenuity and skill, training staff at three hospitals in the eastern region on how to make hand sanitizer using locally available materials.

As a result, over 2,000 liters of the hand sanitizer, which was recently approved by the National Drug Authority, have been produced to date and distributed to 19 different health facilities across the region.

For more information, please visit www.seedglobalhealth.org
Contact us at communications@seedglobalhealth.org

/ Seed Global Health, Uganda, Plot 31, Bukoto Crescent - Naguru
/ P.O. Box 12491 Kampala, **Uganda**
/ 20 Ashburton Pl, Boston, MA 02108, **United States**